

VELscope®

THE MUCOSAL EXAMINATION SYSTEM



SINGLE OUT SUSPICIOUS TISSUE...
EARLY DISCOVERY CAN SAVE LIVES

SYSTEM FEATURES:

- Painless, non-invasive, with no rinses or stains required
- The **VELscope** examination takes only one or two minutes and is easy to incorporate into your workflow
- **Camera Adapter** allows for photodocumentation and tracking of lesions
- **Flexible positioning:** space-saving vertical or low-profile horizontal orientation... your choice
- Disposable **VELsheath/Barrier** ensures asepsis
- Disposable anti-fog **VELcap** helps maintain **asepsis** and **protects** the Handpiece special filtering optics
- Convenient disposable **VELtractor** assists clinician as a "third hand" during the examination and also serves as a **measuring guide**

VELSCOPE PROVIDES IMMEDIATE
BENEFITS FOR THE PATIENT,
CLINICIAN AND PRACTICE

VELscope combines minimal per-patient costs with more effective screening. The investment for **VELscope** can be quickly recouped, yielding a substantial earning potential for the practice.

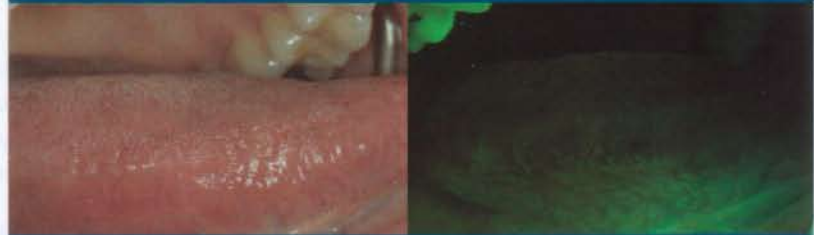
Through the **CDT code D0431**, an increasing number of insurance companies are recognizing **VELscope** as an adjunctive screening device.



Adding VELscope to our diagnostic protocol... has resulted in detection of dangerous lesions that would have otherwise been undetected.

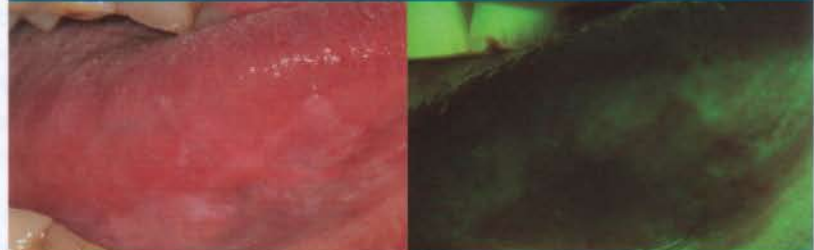
Dr. E Truelove, Seattle, WA

EXAMPLES OF DIRECT VISUALIZATION UNDER BOTH WHITE LIGHT AND VELSCOPE EXAMINATION



NO APPARENT LESION

RETAINED FLUORESCENCE VISUALIZATION



VISIBLE LEUKOPLAKIA

LOSS OF FLUORESCENCE VISUALIZATION
CONFIRMED THROUGH BIOPSY TO BE
SEVERE DYSPLASIA



NO APPARENT LESION

LOSS OF FLUORESCENCE VISUALIZATION
CONFIRMED THROUGH BIOPSY TO BE
CARCINOMA IN SITU (CIS)

IMAGES COURTESY OF THE BRITISH COLUMBIA ORAL CANCER PREVENTION PROGRAM

FOR FURTHER INFORMATION ABOUT VELSCOPE
AND LED DENTAL INC., PLEASE VISIT OUR
WEBSITE AT WWW.VELSCOPE.COM



LED DENTAL INC.
201-15047 MARINE DRIVE WHITE ROCK BC CANADA V4B 1C5
TEL 1-888-541-4614 FAX 604-541-4613 WWW.VELSCOPE.COM

VELscope®

THE MUCOSAL EXAMINATION SYSTEM

*Without VELscope neither I, the oral surgeon, nor the head and neck surgeon could visualize the lesion...
VELscope literally saved the patient's life.*

Dr. A Palombaro, Binghamton, NY

BRING ORAL DISEASE INTO VIEW

ORAL CANCER KILLS ONE PERSON EVERY HOUR, 24 HOURS A DAY IN THE UNITED STATES

- Oral cancer is the sixth most common cancer in males in the U.S.
- Unlike several other cancers, the **survival rate** for oral cancer has remained **unchanged for decades**
- The overall 5-year **survival rate** for oral cancer is **52%**, but when discovered **early**, it increases to over **80%**
- Unfortunately, **only 35%** of oral cancer cases are diagnosed in the **early stages**. **Why?** Because there have been few advances made in screening techniques and there are significant limitations inherent to white light and chemiluminescence light examination of the oral mucosa
- Pre-malignant changes actually start below the surface, at the basement membrane. These changes may not be apparent to the naked eye until the disease progresses to the surface

ORAL HEALTHCARE PROFESSIONALS ARE THE FIRST LINE OF DEFENSE IN THE FIGHT AGAINST ORAL CANCER

FLUORESCENCE VISUALIZATION TECHNOLOGY

A new tool for oral mucosal examination

VELscope® is a revolutionary hand-held device that provides dentists and hygienists with an easy-to-use adjunctive mucosal examination system for the early detection of abnormal tissue.

The patented VELscope technology platform was developed in collaboration with the British Columbia Cancer Agency and MD Anderson Cancer Center, with funding provided in part by the NIH. It is based on the **direct visualization of tissue fluorescence** and the changes in fluorescence that occur when abnormalities are present.



The VELscope Handpiece emits a safe blue light into the oral cavity, which **excites** the tissue from the surface of the epithelium through to the **basement membrane** and into the **stroma** beneath, causing it to fluoresce. The clinician is then able to immediately view the different **fluorescence** responses to help **differentiate between normal and abnormal tissue**. In fact, **VELscope is the only non-invasive adjunctive device clinically proven to help discover occult oral disease**.

Typically, healthy tissue appears as a bright **apple-green** glow while suspicious regions are identified by a loss of fluorescence, which thus appear **dark**.

